

MEASURES OF LIFE

21st July - 30th Sept

INVESTIGATE

ALL GALLERIES

Circle the different fixtures and fittings you spot in this exhibition.



SCREW



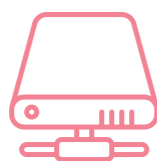
NUT



BULLDOG CLIP



PLUG



HARD DRIVE



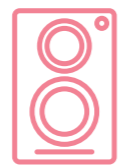
SPRING



CABLE TIE



LIGHTBULB



SPEAKER

Ask a volunteer to help you.



There are hidden love stories within Anna Ridler's work, find a hidden love story within this word search.

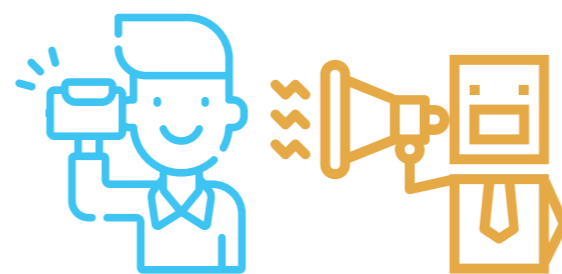
GALLERY 3



A	Y	O	U	B	A	D
E	H	K	Y	O	R	P
Y	S	M	Y	T	E	L
K	S	L	R	P	B	C
N	Q	A	O	A	F	T
U	Y	B	S	V	M	Y
F	U	T	U	R	E	A

GALLERY 1

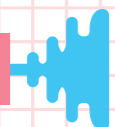
These machines record the sounds around them. Use the funnel provided to listen to the noises they make and draw the sound waves or add your own sounds by blowing through the funnel.



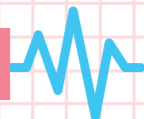
MACHINE 1



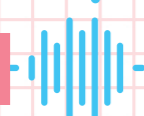
MACHINE 2



MACHINE 3



MACHINE 4



TALLEST

SMALLEST

GALLERY 1

Ask a volunteer to help you measure these works.

How tall is the tallest work?

How small is the smallest work?

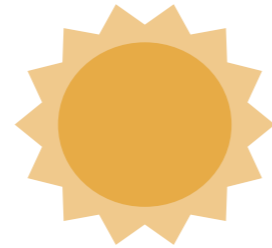
MEASURES OF LIFE

21st July - 30th Sept

RESPOND

GALLERY 2

The work in this gallery by Stanza looks like a city lit up at night. Can you imagine what cities will look like in 100 years' time? Draw what you think it will look like.



GALLERY 2

This Rachel Ara work looks like a robot. Using the pictures provided create your own robot. Ask a parent or guardian to take a picture and post on social media using the hashtag #lumenhull

GALLERY 3

The portraits in Carla Gannis' work move and change when viewed through an app. Using the mirror provided draw yourself as a character from the future.



Here is a task you can carry out at home.

Write a story about the future. Think about the work you have seen in this exhibition, imagining robots have taken over our world. What would they do? How would we interact with them? What language would they speak?

TASKS TO TAKE HOME