

# HUMBER STREET GALLERY

EXHIBITION GUIDE  
PROJECT SPACE

## NINENA KALU

*WRAPPING*

30 OCTOBER – 8 DECEMBER 2019

Nnena Kalu is an artist working with ActionSpace, a London based visual arts organisation that supports artists with learning disabilities. Kalu binds and layers materials creating large, colourful structures that wrap themselves around the room, reacting to the size, shape and environment of each new setting.

Here, Kalu's site-specific installation uses readily available materials such as plastic tubing, newspaper, foam, cling film, fabric and tape. The artist's practice invites us to experience firsthand, the boundaries between art, play, studio practice and exhibition making.

During a week-long live installation taking place from 30 October – 5 November audiences can observe Kalu's energetic making process as she constructs her work. Towards the final stages of the installation the sculptures are suspended at various heights to create an immersive and ambitious experience.

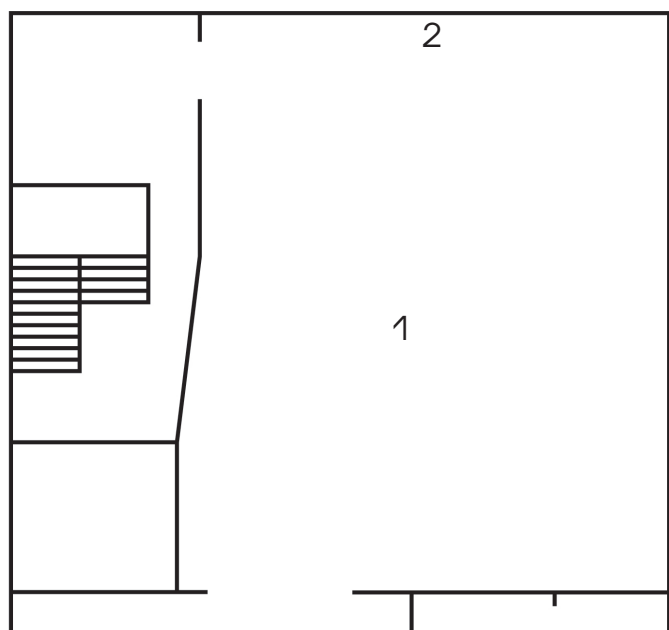
## ABOUT THE ARTIST

Nnena Kalu is a studio artist at ActionSpace, a London based visual arts organisation that supports artists with learning disabilities. Kalu has created extensive site-specific installations in public settings for Le Madmusee's "Capharnaum" at Theatre de Liege in Belgium in 2016 and at Project Ability's Trongate 103 Gallery for Glasgow International 2018. Her Glasgow installation was one of a-n's recommended events for the Festival, "Kalu undoubtedly has an essence of Phyllida Barlow about her but Kalu's ingenuity makes Barlow look demure and restrained in comparison – her colour palette is riotous and the taped shapes crackle with surprising, boundless energy."

## ABOUT ACTIONSPACE

ActionSpace is a London based visual arts organisation that supports artists with learning disabilities and creates innovative projects for people with learning disabilities to engage with the visual arts. ActionSpace's work with high profile cultural organisations such as the Royal Academy of Arts, Camden Arts Centre, Outside In and Pallant House Gallery has helped to establish a place for artist with learning disabilities in the contemporary arts sector.

## WORK DETAILS



1. *Wrapping*, 2019  
Film Wrap, Tape, Fabric, VHS Tape,  
Polycarbonate Tubes  
Dimensions variable

2. *Vortex Paintings*, 2018 – 2019  
Acrylic on paper  
110 x 100cm

---

## GLOSSARY

**SITE SPECIFIC:** Site-specific art is artwork created to exist in a certain place. Typically, the artist takes the location into account while planning and creating the artwork.

**MULTI FACETS:** Having a variety of different and important features or elements.

**INSTALLATION:** Installation art is an artistic genre of three-dimensional works that often are site-specific and designed to transform the perception of a space.

**IMMERSIVE:** generating a three-dimensional image which appears to surround the user.

---

## RELATED EVENTS

**LIVE INSTALL: NNENA KALU**  
30 October – 5 November  
10 – 6pm  
FREE, no booking required

---

## SPECIAL THANKS TO...

With thanks to GF Smith and Image Data Group for their support.

---

## ABOUT US

Humber Street Gallery is an Absolutely Cultured project, bringing a vibrant, high-quality contemporary art space to Hull. The gallery's free programme of exhibitions is supported by a series of talks, performances, screenings and workshops.

Absolutely Cultured puts culture at the heart of Hull's ambition and aspirations, commissioning and producing a programme of events and projects which are ambitious, surprising and imaginative. In addition to the gallery and our broader cultural events, we continue to develop our world-class volunteer programme, to deliver initiatives to support the cultural sector and to offer access to creative learning opportunities.

---

## OPENING TIMES

### GALLERY & CAFÉ

Mon: 10:00 – 18:00 (Café only)

Tue – Sun: 10:00 – 18:00

First Thu of the Month: Until 20:00

(During Exhibitions)

---

## CONTACT US

Humber Street Gallery  
64 Humber Street  
Hull  
HU1 1TU

[humberstreetgallery.co.uk](http://humberstreetgallery.co.uk)  
[info@humberstreetgallery.co.uk](mailto:info@humberstreetgallery.co.uk)  
01482 323 484

Get the latest updates by following Humber Street Gallery on our official social media channels.

INSTAGRAM @humberstreetgallery  
FACEBOOK @humberstreetgallery  
TWITTER @humberstgallery

Absolutely Cultured is a registered charity. If you would like to support our work, you can do so at [absolutelycultured.co.uk](http://absolutelycultured.co.uk)

Official Funding Partners

